



OUR HONORED AND REVERED PRESIDENTS OF THE AME CHURCH LAY MOVEMENT

AFRICAN METHODIST EPISCOPAL CHURCH LAY ORGANIZATION



GREETINGS TO THE LAITY AND CLERGY

We stand on the shoulders of those who came before us: the women and men who first, for their love of God, and secondly, for their commitment, dedication, patience, hard work, and devotion to the African Methodist Episcopal Church (AMEC) and especially, the Lay Movement. They served with their individual leadership style and offered a new dynamic to the missions and goals of this great organization. We pay homage to these distinguished women and men for their service.



A heartfelt thank-you is extended to all former Historiographers who continue to support this dynamic organization. We give Special kudos to Sister **Pam Tilley** from the 10th Episcopal District who provided the basic source document as a means to bring information up-to-date to share with our readership.



CONNECTIONAL LAY ORGANIZATION PAST PRESIDENTS / CURRENT PRESIDENT 1912 – 2021

This PowerPoint presentation provides a “snapshot” of our eminent former presidents from inception in 1912 as the “Laymen’s Missionary League,” to the “Connectional Lay College” in 1916, to its present name in 1948 as the “Connectional Lay Organization” (CLO) [as referenced in the AME/Lay Organization history books].

These women and men were elected to lead and provide the necessary vision, programs and opportunities for those who followed. In the formative years, it was not always easy to advance but with their strong faith in God, they persevered.

We honor their wisdom, leadership, God-given talent, ability to work with others and their ability to bolster the cause of the Lay Movement in the African Methodist Episcopal Church.



Of special note, included in their visionary leadership, a new dynamic was introduced. The **Y**oung **A**dult **R**epresentative (YAR) Initiative was activated and made a part of this Organization's core fiber. This was done to address the need for the Lay Movement to seize the opportunity to grow the leadership of generations of young people to follow.

And now, we welcome with humility and forward-thinking, the election of our first-ever Global African President, Mr. Matikane A. Makiti, during the 37th Biennial Session held in Orlando, FL on July 11, 2021. Mr. Makiti resides in the 19th Episcopal District. With his visionary leadership, teamwork, and well-thought-out plan of action for the CLO, as well as enhancing the work of the AME Church, the CLO will continue to move forward.

We are bound for higher ground!



The following quote taken from our CLO website rings true to our time:

“Today, the organized lay movement in the African Methodist Episcopal Church operates as a vital force for good because it is free, independent and unmotivated by any desire, motive or purpose other than the general welfare of African Methodism.”

Thank God for the work of our Ancestors and to God Be the Glory! Hallelujah and Amen!





CHARLES H. JOHNSON

Professor at Wilberforce College

President

The Laymen's Missionary League (1912-1916)
(3rd Episcopal District)

- ❑ The laymen's organizations of this era that were meeting quietly, merged with the Laymen's Missionary League and became the first organized lay effort at the seat of the General Conference.

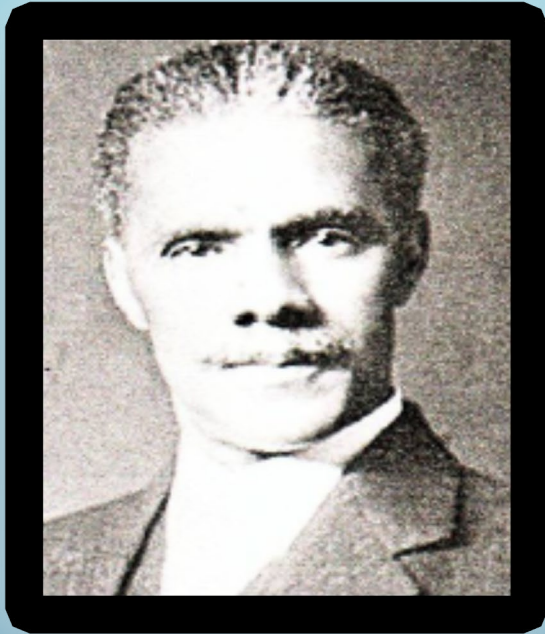


DR. CARL V. ROMAN

Professor at Nashville's Meharry Medical College
Founded the Otolaryngology Department at Meharry College
Editor of *AME Review*
Editor of *Journal for the National Medical Association*
Physician and Noted Author
Outstanding teacher and Bible scholar

FIRST President
The Lay College (1916-1920)
(13th Episcopal District)

- ❑ Laymen not satisfied with the progress of the "Laymen's Missionary Movement" reorganized at the seat of the General conference and formed a new lay group, "The Lay College."

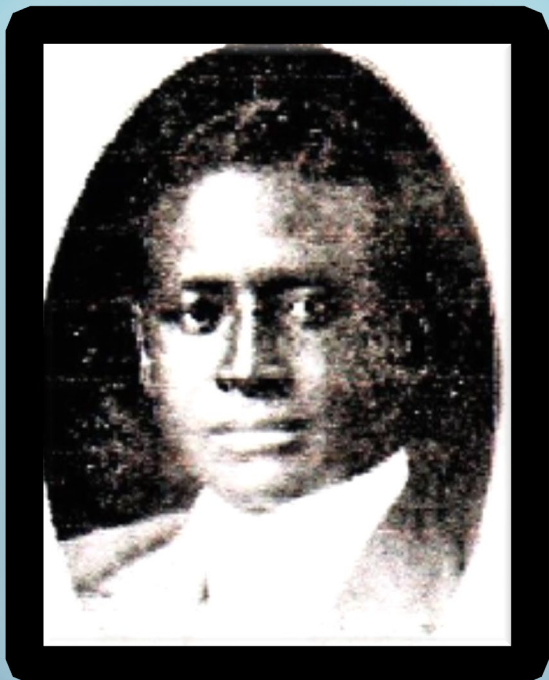


AARON EUGENE MALONE

Teacher, Principal, Bible Salesman

SECOND President
The Lay College (1920–1924)
(3rd Episcopal District)

- ❑ Mr. Malone was elected president following Dr. Roman. He served well in administration and education.
- ❑ He achieved credibility and status from programs developed, in St. Louis, MO, through his celebrated wife, Annie Turnbo Malone, and her Poro College.



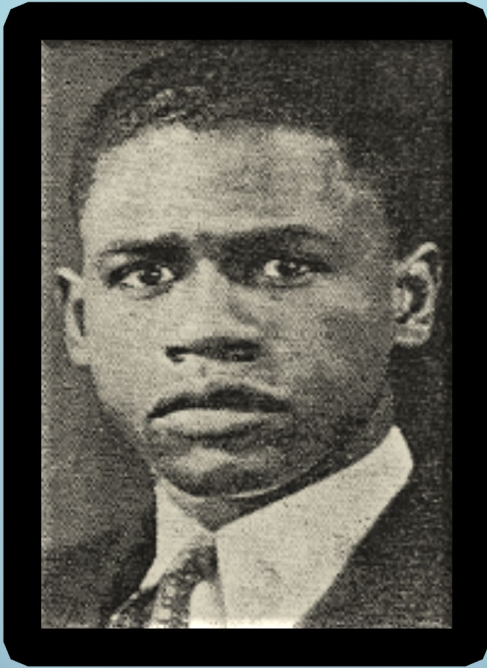
DR. REDEN RECHE WILLIAMS

Physician, Mason, Superintendent of Church School
Vice President of the State National Medical Association

THIRD President
The Lay College (1924-1936)
(11th Episcopal District)

- ❑ Dr. Williams, born near Williston, FL, brought great support to the college as a Statesman, teacher, administrator and AME Church leader.
- ❑ He had the same issues of service as did others who worked during the General Conference and lost momentum between Conferences.





ATTORNEY HERBERT LUTHER DUDLEY

Attorney of Record for the AMEC

Cited by President Lyndon Johnson
Served 50 years in various Bar Associations
Argued before the Supreme Court

FOURTH President
The Lay College(1936-1940)
(4th Episcopal District)

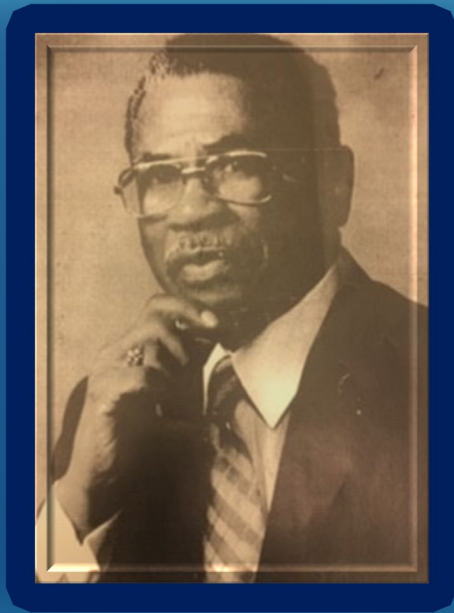
- ❑ Attorney Dudley, born in Prairie Lea, TX, made his home and life work in Detroit, MI.
- ❑ He was an outstanding layman and a champion for equal rights. Decorated with the coveted “Absalom Jones Layman Award,” he brought consistency of service and became the model for laymen.

JOHN A. HARRIS

Professor at Allen University
Superintendent of State and District AME Sunday Schools

FIFTH President
The Lay College (1940-1944)
(7th Episcopal District)

- ❑ Served one term of the General Conference as President of “*The Lay College.*” There is very little recorded about the details of his service but as an educator, he served with distinction.



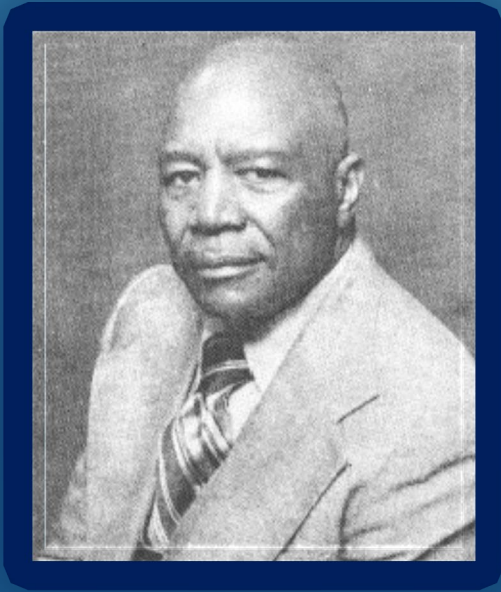
ATTORNEY HERBERT LUTHER DUDLEY

A highly decorated Statesman
Sixth and Last President of The Lay College

***FIRST Connectional Lay Organization
President (1944–1959)
(4th Episcopal District)***

- ❑ Attorney Dudley lived to be a Centenarian plus one.
- ❑ He served his years with great distinction.
- ❑ His most note worthy achievement was his advocacy to develop a consistent lay movement and equal representation for the body of the church.
- ❑ He was steadfast and unmovable.
- ❑ He ushered in a new era of the connectional church as President.
- ❑ The General Conference requirements restricted four years of his service, from 1940-1944.





JASON DAVID "JD" WILLIAMS

An Entrepreneur by profession
Trained other young men to be like-minded

***SECOND Connectional Lay Organization
President (1959–1985)
(5th Episcopal District)***

- ❑ Faithfully served as a visionary Connectional Lay Organization (CLO) President – longest serving CLO President.
- ❑ Represented the CLO with wisdom, dignity, class and respect.
- ❑ Initiated the Connectional Lay Economic Development Campaign (CLEDC) as a means to raise and set aside funds for the CLO.
- ❑ Like his predecessor, he surrounded himself with goal-oriented people to grow the lay movement and its programs to support the growth of the African Methodist Episcopal (AME) Church.
- ❑ He also initiated legislation to bring about necessary change and bring the church and lay movement into the new age.





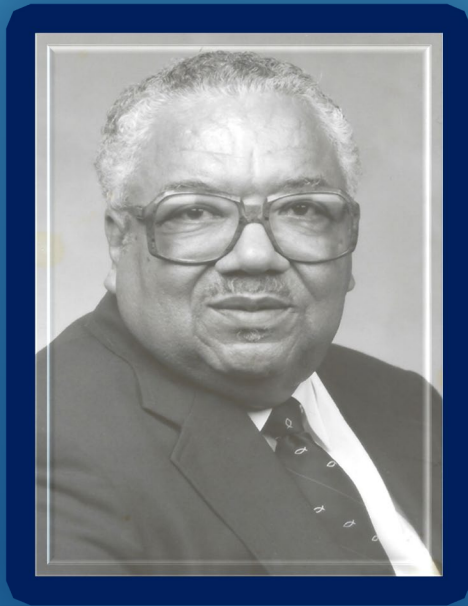
DR. KATHERYN MIDDLETON BROWN

Educator in Biology and Horticulture
A resident of the WMS Presidium
Council of Methodist Churches (1st black female)

THIRD Connectional Lay Organization President (1985–1993) (6th Episcopal District)

- ❑ 1st female Connectional Lay Organization President.
- ❑ Eight-year rule of service in effect for her service and all future CLO presidents, through legislation proposed by the CLO and approved by the General Conference.
- ❑ Secured the first Lay Organization Headquarters in Atlanta, GA.
- ❑ Dr. “Kay” Brown was born and raised in Charleston, SC, but served her calling from Atlanta, GA. She raised the level of professional servants as she set about disciplining AME talent.





JAMES L. "JL" WILLIAMS

Navy Veteran of the Southwest Pacific
Served on the General Board as elected and ex-officio
Lifetime trustee of Edward Waters College.
Educator in Industrial Arts and Swimming coach

FOURTH Connectional Lay Organization President (1993–2001) (11th Episcopal District)

- ❑ First to incorporate lay regional visits to 15th, 16th, and 17th Districts.
- ❑ Initiated the Jayme Coleman Williams Scholarship.
- ❑ Initiated the J.D. Williams Scholarship.
- ❑ Initiated the Young Adult Representative (YAR) within the CLO, making the person a member of the Executive Board.
- ❑ President "JL," was born in Jacksonville, FL.

ARTHUR DEAN BROWN

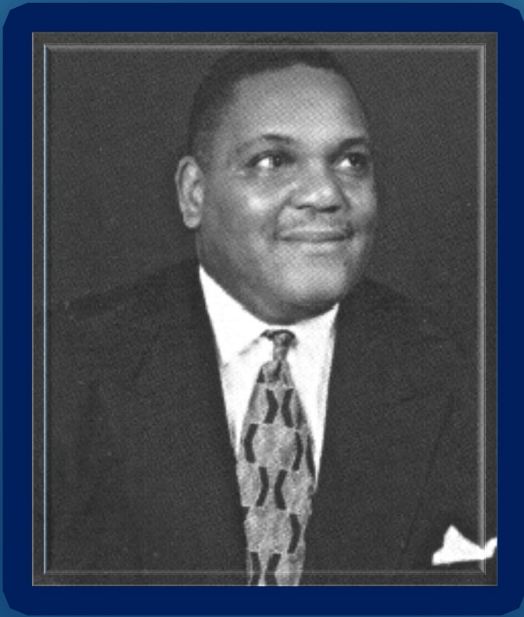
Delegate to the World Methodist Proactive Security Council
Certified Protective Proactive Security Management

**FIFTH Connectional Lay Organization
President (2001–2003)**

**(3rd Episcopal District
passed away while in service as President)**

- ❑ Mr. Brown was a dedicated layman of service known to laymen in the Ohio area as “ Mr. Mt. Vernon.”
- ❑ He was a General Board Member to the AME Church.
- ❑ He served various positions in the 3rd District faithfully for many years until elected to the highest office of Connectional Lay Organization, President.
- ❑ He established the registration fees for the Executive Board meetings.



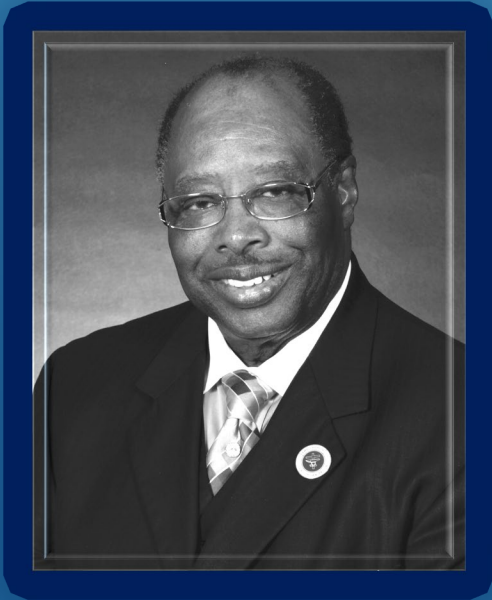


JESSE L. BURNS, Jr.

Attended Stetson University
A dedicated musician and passionate AME

SIXTH Connectional Lay Organization President (2003–2009) (11th Episcopal District)

- ❑ Conceptualized and initiated the biennial AME Colleges and Universities Black Tie Gala.
- ❑ 1st CLO Travel to South Africa (Johannesburg and Cape Town).
- ❑ Reorganized the 16th District Lay Organization.
- ❑ Installed Lay Benediction set to music.
- ❑ Gifted “Human Resource Development” to the Connectional Lay Organization and his efforts in the earlier “mentorship program” to enable underserved lay persons to serve on the Connectional level and gain a better commitment to the AME Church.



DR. WILLIE CLAYTON GLOVER

Honor graduate of Wilberforce University

Member of Phi Delta Kappa

Life member of the National Wilberforce University Alumni Association and listed in the distinguish Hall of Fame of the University

A recipient of the distinguish *Cheryl A. Boyce Award* for his work in mental health

Listed in three Editions of "Who's Who in Black Columbus"

SEVENTH Connectional Lay Organization President (2009–2017) (3rd Episcopal District)

- ❑ First time in the history of the Lay Organization, brought it into compliance with IRSs tax laws.
- ❑ Consistently donated funds to American and African AME colleges or universities during each Biennial.
- ❑ Established a Disaster Relief Fund Program giving assistance to several Districts during natural disasters.
- ❑ Dr. Glover is the Global Emeritus President of the Connectional Lay Organization of the African Methodist Episcopal Church and a past President of the Third Episcopal District Lay Organization.
- ❑ Implemented the biennial AME Colleges and Universities Black Tie Gala.





VALERIE FAITH GARY BELL

Connectional Women's Missionary Society-Chief Protocol Officer
Elected to the General Board in 1992

Served as Secretary of the *Commission on Statistics/Finance 2000-2016*

Former member of the Executive Committee of the General Board

***EIGHTH* Connectional Lay Organization President (2017–2020)**

(2nd Episcopal District – passed away while in service as president)

- ❑ Initiated the Lay Certification-Training Program at Payne Theological Seminary.
- ❑ Initiated reforms to brand the Connectional Lay Economic Development Campaign.
- ❑ Instituted the alignment of Lay Convention with District meeting schedules.

Now serving as the **Connectional Lay Organization President**



MATIKANE ABEDNEGO MAKITI
(19th Episcopal District)

Bishop Ronald E. Brailsford, Sr., CLO Commission Chairman
Mr. M. A. Makiti, CLO President
Mr. William (Bill) Ayers, CLO Historiographer

